

## Viola

Serenade  
für Streichinstrumente

Ermanno Wolf-Ferrari

Allegro

7 *p* *p* *rit.* *a tempo* *p*

14 *pp* *p* *p*

21 *p*

28 *pp* *pp*

34 *f*

39 *p*

44

48

53 *pp* **A**

59 *grazioso, espr.*

65 *cresc. sf*

72 *p pp leggiero cresc.*

78 *sf pp*

84 *f*

91 *sf sf*

98 *p div.*

106 *tutti* **2**

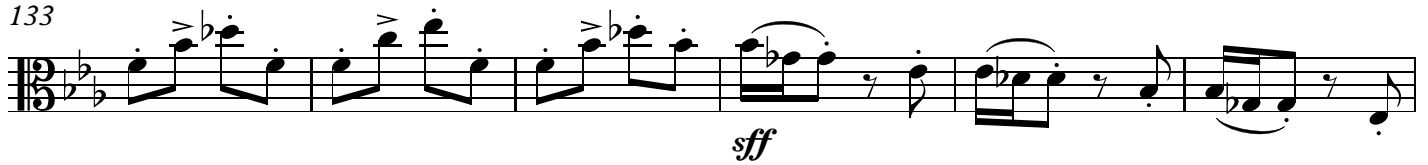
114 *pp leggiero* 1. 2. *p pp*

121 *p sf*

127



133



139



145



151



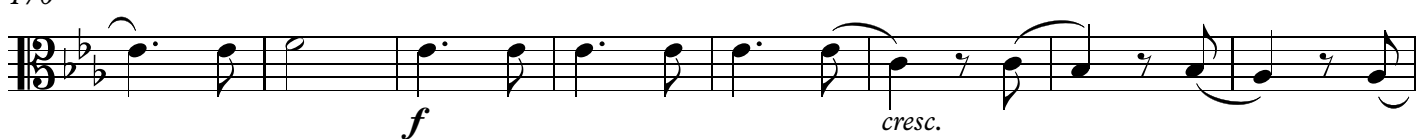
157



163



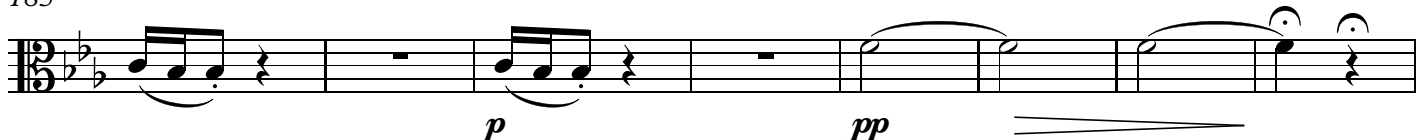
170

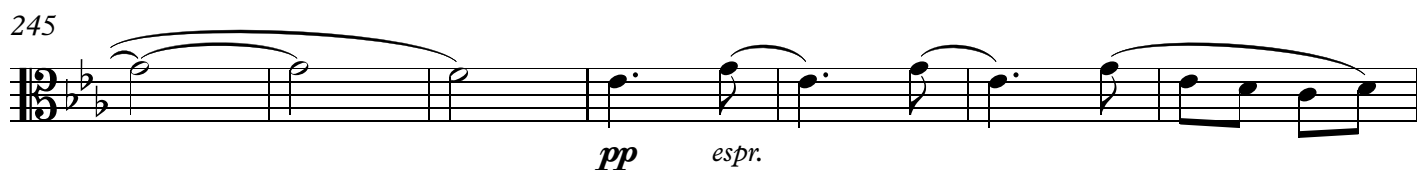
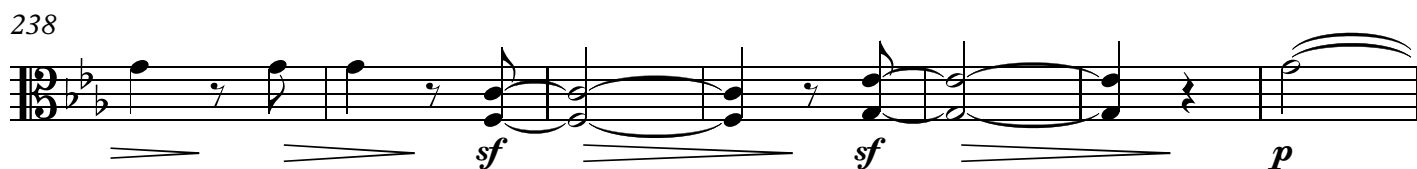
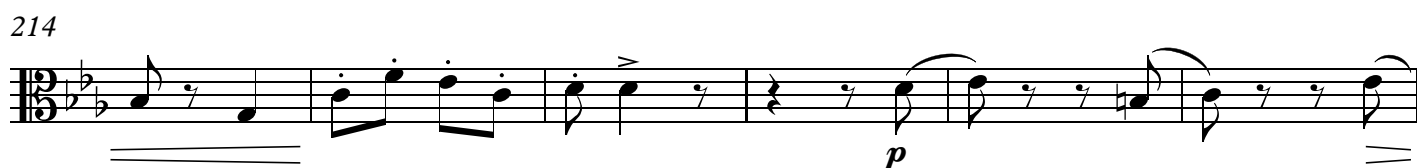
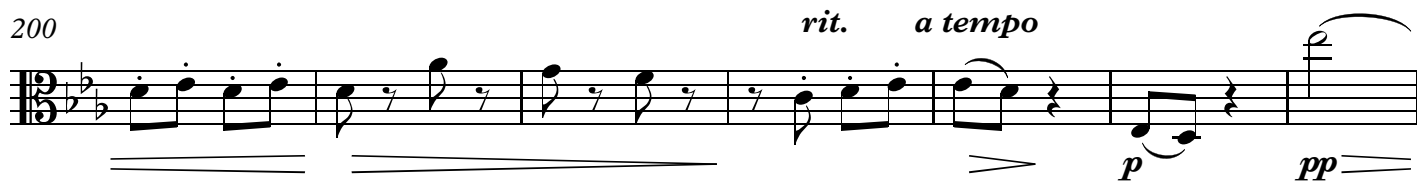


178



185



193 **B**

259

*f ff p f p f*

266

*p f p sf f p cresc.*

274

*tutti*

281

*sf p*

287

*f p*

294

*f*

301

*p dim.*

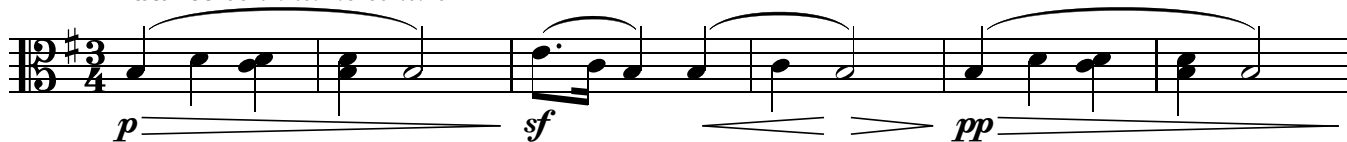
308

315

*pp pp pp*

321

*ff p*

*Andante con intimo sentire*

7



13



18



22



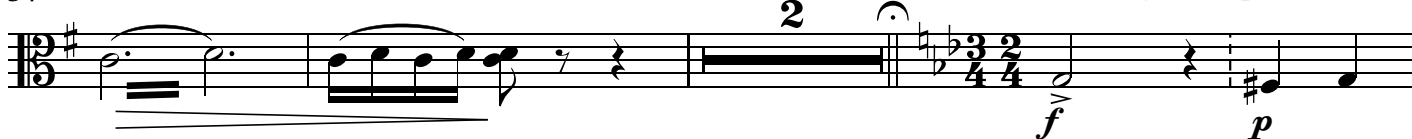
26



30



34

*Più mosso. energico rhapsodicamente*

39



42 *ff* *tr* *sf*

45 *rit.* *a tempo, tranquillo* *p*

49 *sf cresc.* *marc.*

52 *a tempo* *ff* *p* *f* *p* *f* *p*

55 *f* *cresc.* *f*

57 *ff* *rit.* *f* *Tempo I. (Andante)*

60 *div.* *p espr.*

66 *mf* *p* *cresc. sempre*

71 *tutti* *sff*

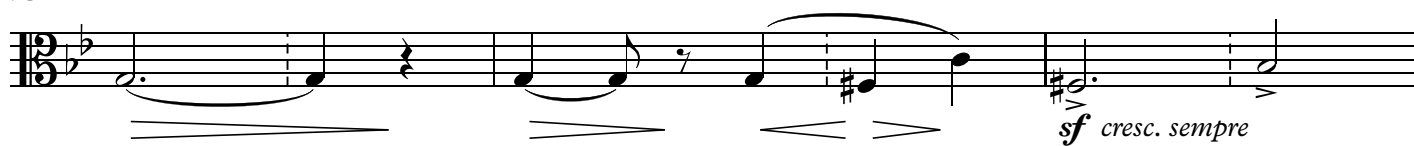
76 *pp*

81 *accel. molto*83 **Tempo II. (Più mosso)**

86

89 *rit.* *a tempo, tranquillo*

93



96

99 *accel.*



102 *tr* *ritard.*

*ff* *pp* *ff*

107 *rit. molto*

*pp* *f* *p* *f* *p* *f* *p*

112 **Tempo I. (Andante)**

*f* *p*

117

*f* *p*

123

*f* *p*

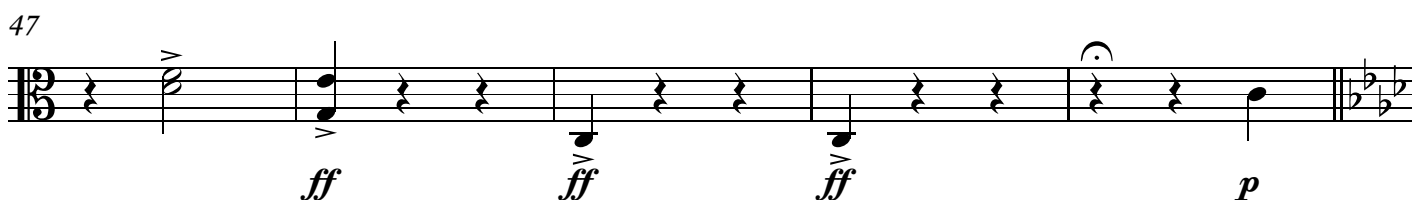
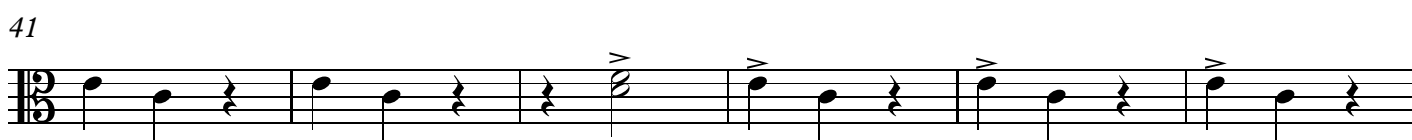
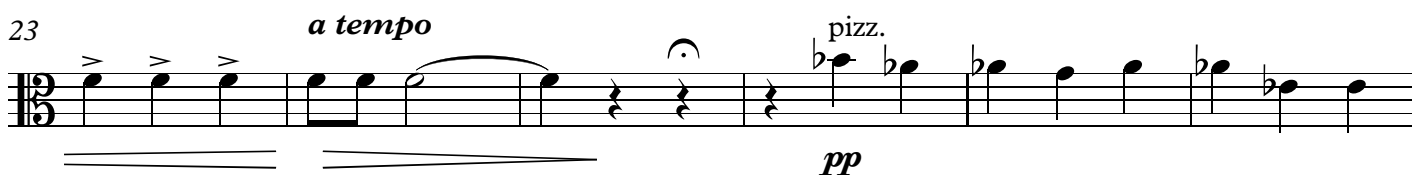
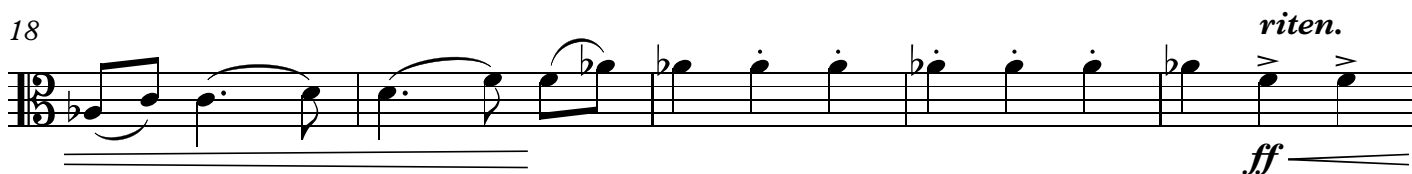
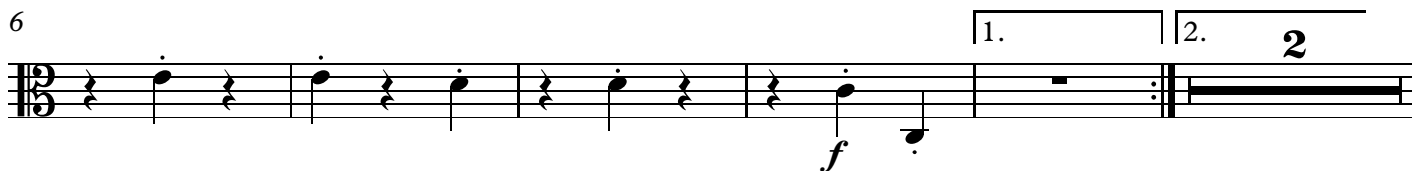
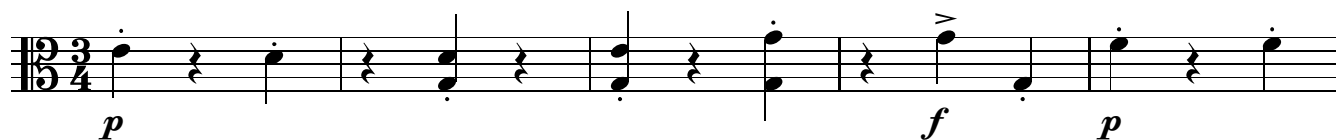
128

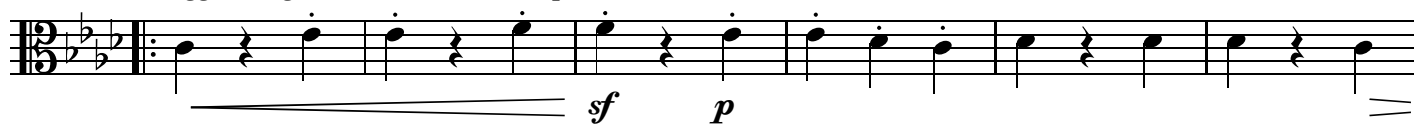
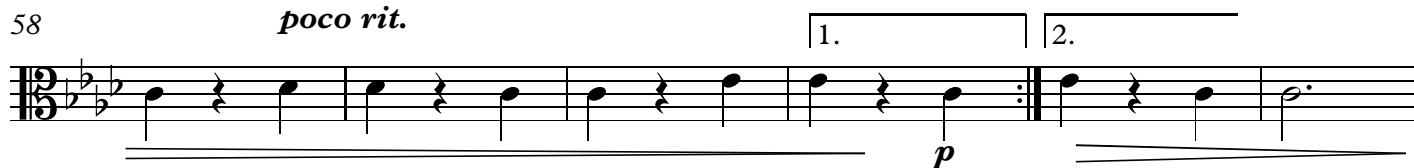
*pp* *pp sempre*

134

*pp* *ppp*

## Scherzo. Presto

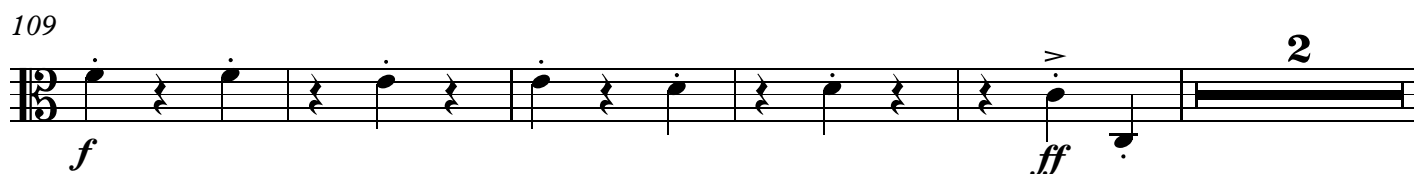


52 *leggero e grazioso e staccato sempre*58 *poco rit.*64 *a tempo*70 *poco rit.*76 *a tempo*83 *poco rit.*90 *a tempo*97 *poco rit.*

103



109



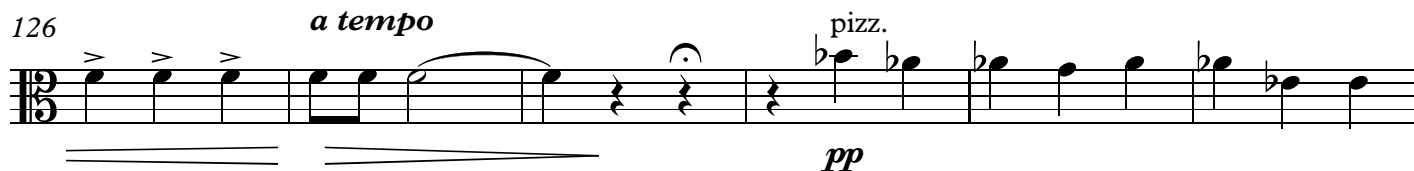
116



121



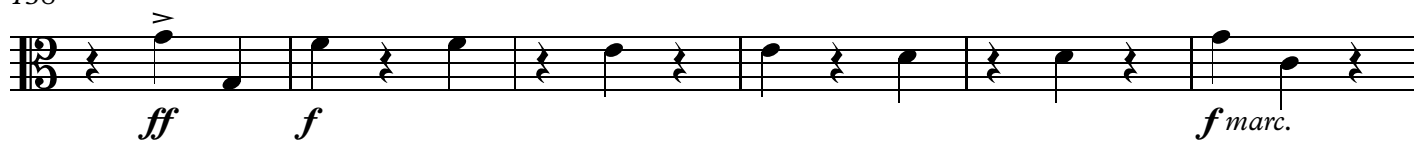
126



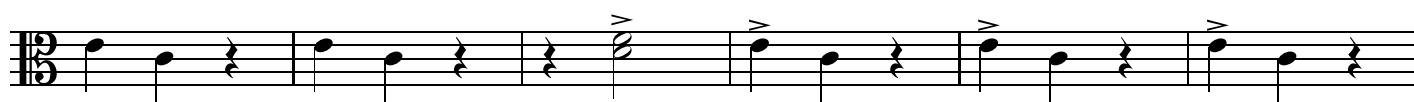
132



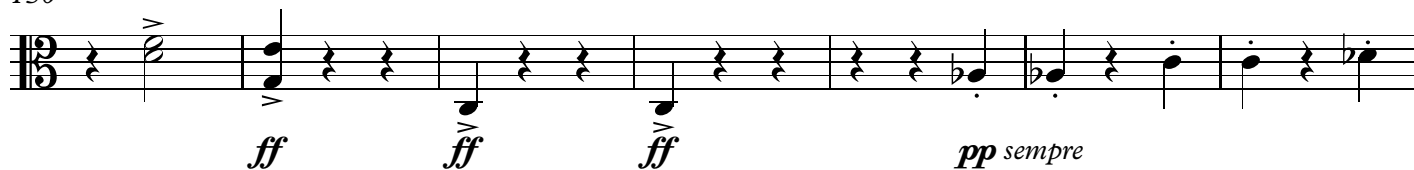
138



144



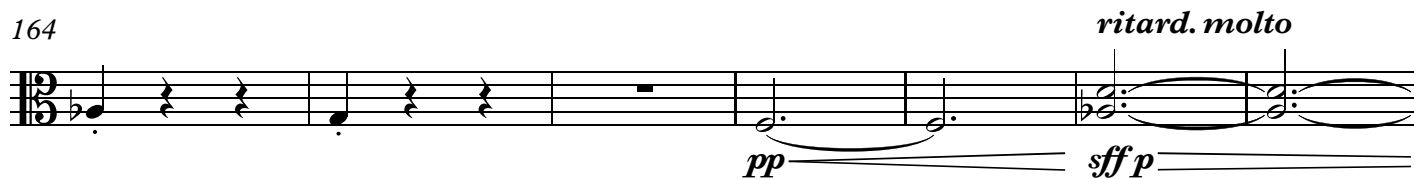
150



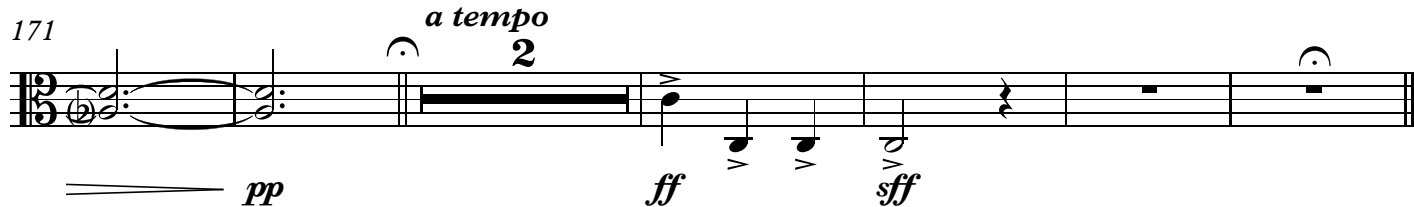
157

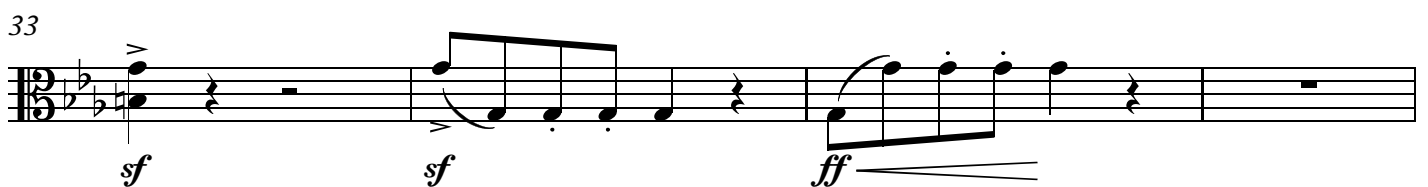
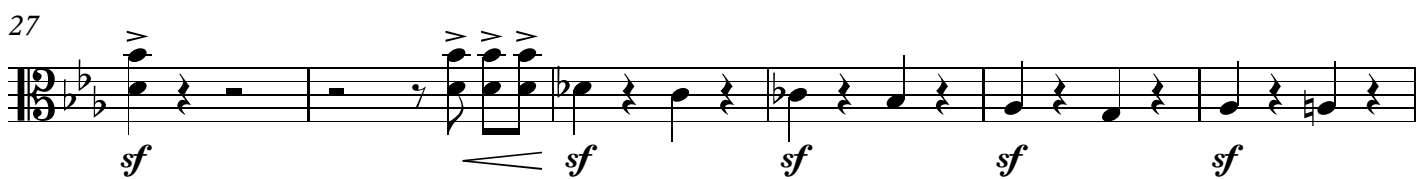
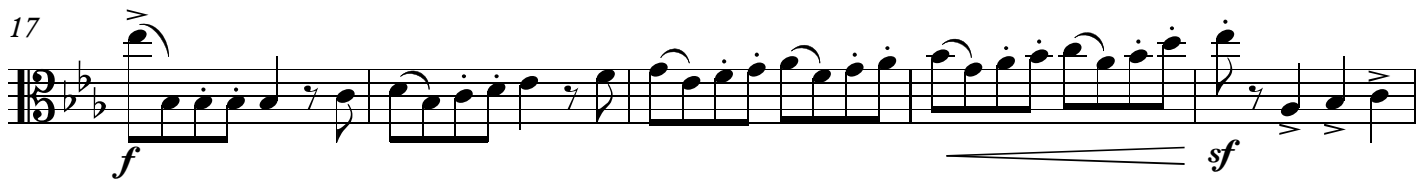


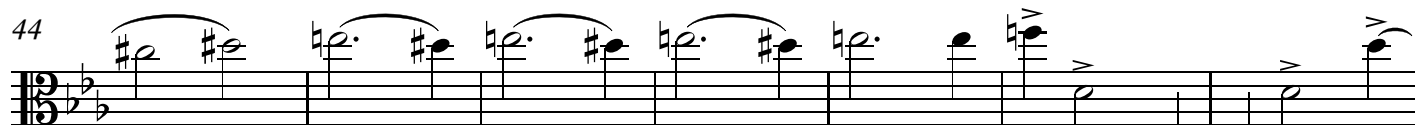
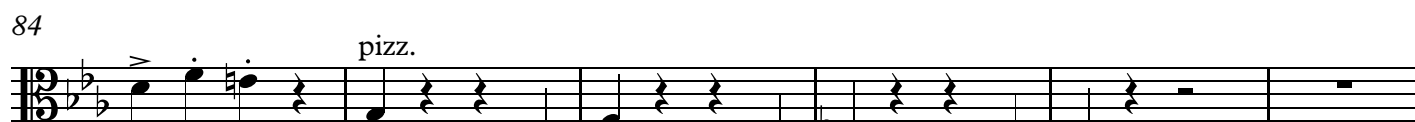
164



171



**Finale. Presto**

**A***pp molto espress.**cresc.**f**ff**fp**<sf>**p**<sf>**fp**p**f**p**f**p**f**p**dim.*

90 arco  
*p*

95 *p* *p* *pp* *p* 5

105

109 *f*

113 *f*

117 *sf*

121 *sf* *sf*

126 *sf* *sf* *sf*

130 *sf* *sf* *p cresc.*

134 *sf* *sf* *sf* *ff* *p*

138 C

*pp* *p* *sf* *leggerissimo*

144

*sf* *sf*

150

*ff*

156

*ff* *fp*

161

*fp* *fp*

166

*sf* *sf* 5

176 D

*leggero ed eguale*

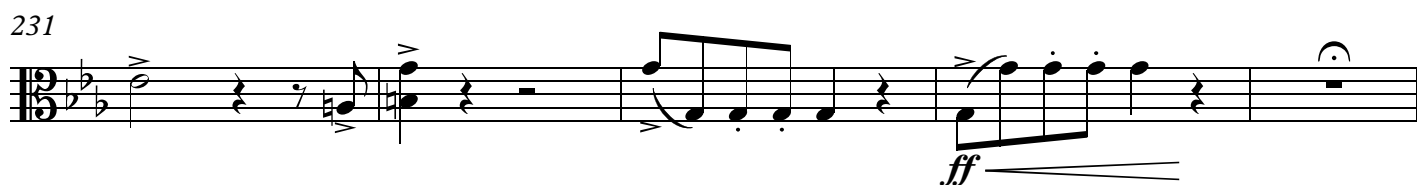
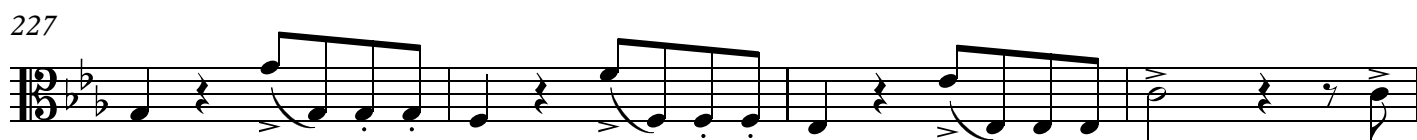
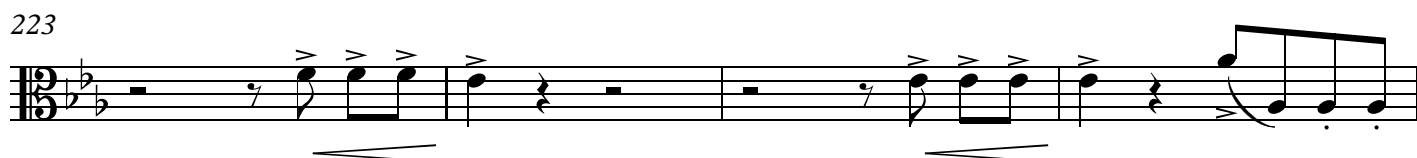
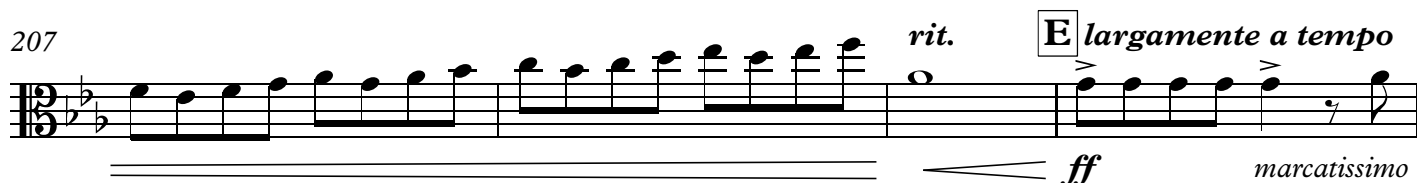
181

185

*cresc.*

189





236

*p* *sf* *sf*

241

*fp* *sf* *sf*

246

*p*

251

*p*

256

*p* *f*

261

*p* *f* *p* *f*

266

*pizz.* *dim.* **2**

274

**F** arco *pp*

281

*cresc.* *accelerando*

288

294 **Prestissimo**  
*ff*

Staff 294-300: Treble clef, key signature of two flats (B-flat, E-flat), 2/4 time. The music features a series of eighth and sixteenth notes with accents. A dynamic marking of *ff* is present.

300  
*sf*

Staff 300-306: Bass clef, key signature of two flats, 2/4 time. The music continues with eighth and sixteenth notes. A dynamic marking of *sf* is present.

306  
*sf* *sempre ff* **3**

Staff 306-315: Bass clef, key signature of two flats, 2/4 time. The music features a triplet of eighth notes. A dynamic marking of *sf* is present, followed by *sempre ff*. A triplet of eighth notes is marked with a '3'.

315 *lunga* **Tempo I.**  
*p* *cresc.*

Staff 315-320: Bass clef, key signature of two flats, 2/4 time. The music features a half note followed by eighth notes. A dynamic marking of *p* is present, followed by *cresc.*

320

Staff 320-324: Bass clef, key signature of two flats, 2/4 time. The music features a series of eighth notes.

324

Staff 324-328: Bass clef, key signature of two flats, 2/4 time. The music features a series of eighth notes.

328  
*f*

Staff 328-332: Bass clef, key signature of two flats, 2/4 time. The music features a series of eighth notes. A dynamic marking of *f* is present.

332  
*sf*

Staff 332-336: Bass clef, key signature of two flats, 2/4 time. The music features a series of eighth notes. A dynamic marking of *sf* is present.

336  
*sf* **2** *p*

Staff 336-342: Bass clef, key signature of two flats, 2/4 time. The music features a series of eighth notes. A dynamic marking of *sf* is present, followed by a triplet of eighth notes marked with a '2'. A dynamic marking of *p* is present.

342  
*p* *sf* *sf*

Staff 342-348: Bass clef, key signature of two flats, 2/4 time. The music features a series of eighth notes. A dynamic marking of *p* is present, followed by *sf* and *sf*.