

CANZON in A

(*Saranda volde e plio*)
for Brass Quartet

Score (02':43")

Andreas Gabrieli (1533 - 1585)

Arr. Michel Rondeau

Allegro ♩ = 100

Trumpet in C 1

Trumpet in C 2

Trombone

Bass Trombone

C Tpt. 1

C Tpt. 2

Tbn.

B. Tbn.

CANZON in A - Gabrieli - Score

10

C Tpt. 1

C Tpt. 2

Tbn.

B. Tbn.

10

15

(♩ = ♩.)

C Tpt. 1

C Tpt. 2

Tbn.

B. Tbn.

15

22

C Tpt. 1

C Tpt. 2

Tbn.

B. Tbn.

22

30

C Tpt. 1

C Tpt. 2

Tbn.

B. Tbn.

35

C Tpt. 1

C Tpt. 2

Tbn.

B. Tbn.

40

C Tpt. 1

C Tpt. 2

Tbn.

B. Tbn.

44

C Tpt. 1

C Tpt. 2

Tbn.

B. Tbn.

49

C Tpt. 1

C Tpt. 2

Tbn.

B. Tbn.

54

C Tpt. 1

C Tpt. 2

Tbn.

B. Tbn.

59

C Tpt. 1

C Tpt. 2

Tbn.

B. Tbn.

64

C Tpt. 1

C Tpt. 2

Tbn.

B. Tbn.

68

C Tpt. 1

C Tpt. 2

Tbn.

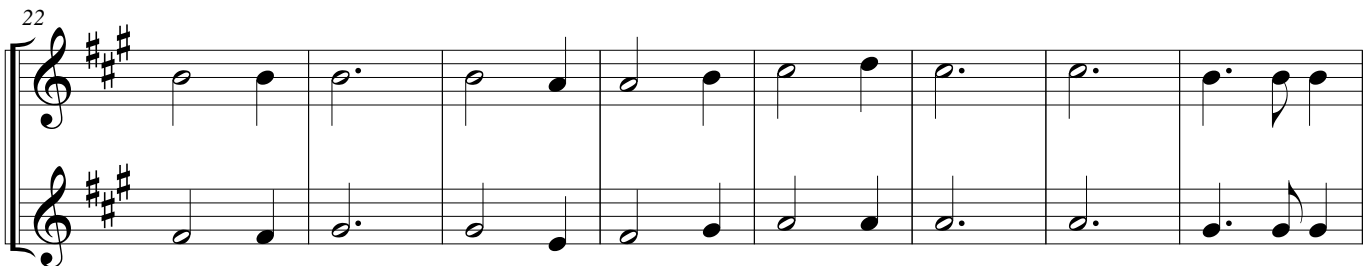
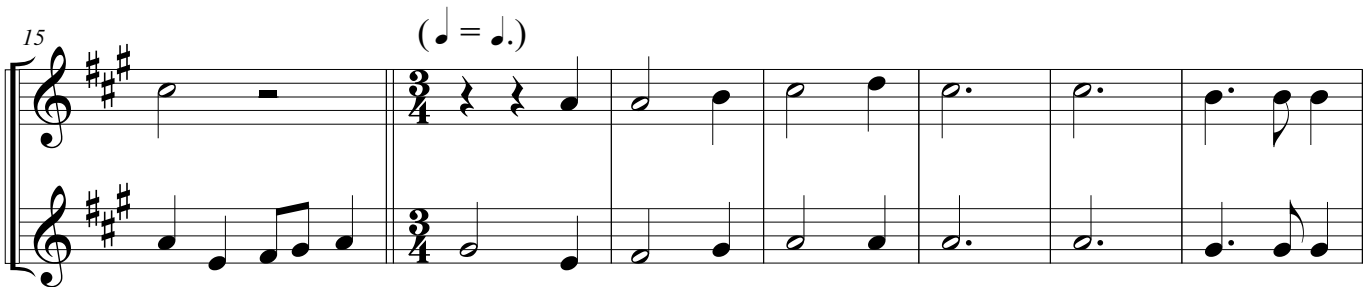
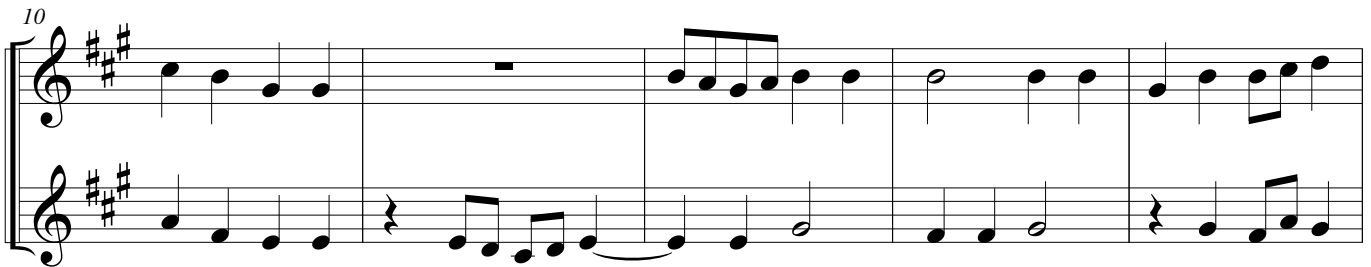
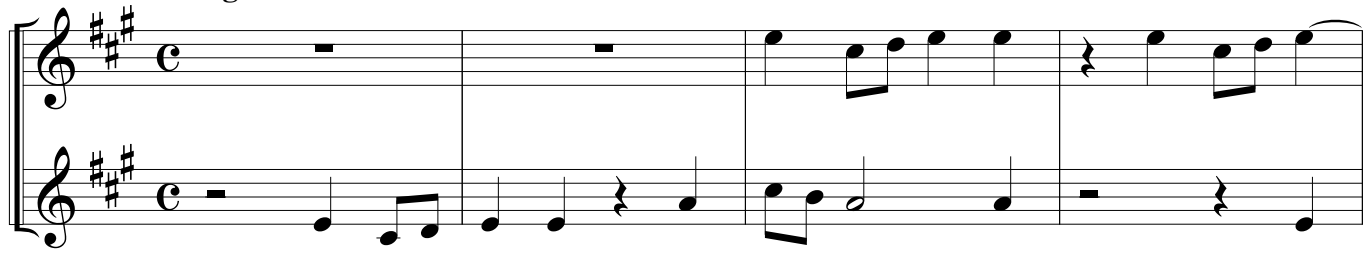
B. Tbn.

CANZON in A

(*Saranda volde e plio*)
for Brass Quartet

Andreas Gabrieli (1533 - 1585)
Arr. Michel Rondeau

Allegro ♩ = 100



CANZON in A- Gabrieli - C Trumpets

30

Measures 30-34 of the musical score. The key signature is A major (three sharps). The time signature is common time (C). The music is written for two staves. Measure 30 starts with a treble clef and a key signature of three sharps. The melody in the treble staff begins with a half note G4, followed by a half note A4. The bass staff has a whole rest. Measure 31 has a common time signature. The treble staff has a half note G4, and the bass staff has a half note G2. Measure 32 has a whole rest in the treble staff and a half note G2 in the bass staff. Measure 33 has a quarter note G4 in the treble staff and a quarter note G2 in the bass staff. Measure 34 has a quarter note A4 in the treble staff and a quarter note A2 in the bass staff.

35

Measures 35-39 of the musical score. The key signature is A major (three sharps). The time signature is common time (C). The music is written for two staves. Measure 35 has a treble clef and a key signature of three sharps. The melody in the treble staff begins with a half note G4, followed by a half note A4. The bass staff has a whole rest. Measure 36 has a half note G4 in the treble staff and a half note G2 in the bass staff. Measure 37 has a half note G4 in the treble staff and a half note G2 in the bass staff. Measure 38 has a half note G4 in the treble staff and a half note G2 in the bass staff. Measure 39 has a half note G4 in the treble staff and a half note G2 in the bass staff.

40

Measures 40-43 of the musical score. The key signature is A major (three sharps). The time signature is common time (C). The music is written for two staves. Measure 40 has a treble clef and a key signature of three sharps. The melody in the treble staff begins with a half note G4, followed by a half note A4. The bass staff has a whole rest. Measure 41 has a half note G4 in the treble staff and a half note G2 in the bass staff. Measure 42 has a half note G4 in the treble staff and a half note G2 in the bass staff. Measure 43 has a half note G4 in the treble staff and a half note G2 in the bass staff.

44

Measures 44-48 of the musical score. The key signature is A major (three sharps). The time signature is common time (C). The music is written for two staves. Measure 44 has a treble clef and a key signature of three sharps. The melody in the treble staff begins with a half note G4, followed by a half note A4. The bass staff has a whole rest. Measure 45 has a half note G4 in the treble staff and a half note G2 in the bass staff. Measure 46 has a half note G4 in the treble staff and a half note G2 in the bass staff. Measure 47 has a half note G4 in the treble staff and a half note G2 in the bass staff. Measure 48 has a half note G4 in the treble staff and a half note G2 in the bass staff.

49

Measures 49-53 of the musical score. The key signature is A major (three sharps). The time signature is common time (C). The music is written for two staves. Measure 49 has a treble clef and a key signature of three sharps. The melody in the treble staff begins with a half note G4, followed by a half note A4. The bass staff has a whole rest. Measure 50 has a half note G4 in the treble staff and a half note G2 in the bass staff. Measure 51 has a half note G4 in the treble staff and a half note G2 in the bass staff. Measure 52 has a half note G4 in the treble staff and a half note G2 in the bass staff. Measure 53 has a half note G4 in the treble staff and a half note G2 in the bass staff.

CANZON in A- Gabrieli - C Trumpets

3

54

Measures 54-58 of the musical score. The key signature is A major (three sharps). The melody in the upper staff begins with a quarter rest, followed by a quarter note, then eighth notes. The lower staff provides a rhythmic accompaniment with eighth and quarter notes. Measure 58 ends with a quarter rest in the upper staff and a quarter note in the lower staff.

59

Measures 59-63 of the musical score. The melody in the upper staff features a half note, followed by quarter notes, and then a half note with a slur. The lower staff continues with eighth and quarter notes. Measure 63 ends with a half note in the upper staff and a quarter note in the lower staff.

64

Measures 64-67 of the musical score. The melody in the upper staff starts with a half note, followed by quarter notes, and then a half note with a slur. The lower staff continues with eighth and quarter notes. Measure 67 ends with a half note in the upper staff and a quarter note in the lower staff.

68

Measures 68-71 of the musical score. The melody in the upper staff begins with a half note, followed by quarter notes, and then a half note with a slur. The lower staff continues with eighth and quarter notes. Measure 71 ends with a half note in the upper staff and a quarter note in the lower staff.

CANZON in A

(*Saranda volde e plio*)
for Brass Quartet

Andreas Gabrieli (1533 - 1585)
Arr. Michel Rondeau

Allegro ♩ = 100

5

10

15 (♩ = ♩.)

22

CANZON in A - Gabrieli - D Trumpets

30

30

35

35

40

40

44

44

49

49

CANZON in A - Gabrieli - D Trumpets

3

54

Measures 54-58 of the musical score. The key signature is one sharp (F#). The music is written for two staves. Measure 54: Treble staff has a quarter rest, then eighth notes A4, B4, C5, D5; Bass staff has a whole rest. Measure 55: Treble staff has a half note D5, then quarter notes C5, B4; Bass staff has eighth notes A4, B4, C5, D5. Measure 56: Treble staff has eighth notes D5, C5, B4, A4; Bass staff has eighth notes A4, B4, C5, D5. Measure 57: Treble staff has a half note A4, then a whole rest; Bass staff has a whole rest. Measure 58: Treble staff has a quarter rest, then eighth notes A4, B4, C5; Bass staff has a quarter rest, then eighth notes A4, B4, C5.

59

Measures 59-63 of the musical score. Measure 59: Treble staff has a whole rest; Bass staff has a quarter rest, then eighth notes A4, B4, C5, D5. Measure 60: Treble staff has eighth notes A4, B4, C5, D5; Bass staff has eighth notes A4, B4, C5, D5. Measure 61: Treble staff has eighth notes D5, C5, B4, A4; Bass staff has eighth notes A4, B4, C5, D5. Measure 62: Treble staff has a half note D5, then a half note C5; Bass staff has a half note A4, then a half note B4. Measure 63: Treble staff has a half note B4, then a whole rest; Bass staff has eighth notes A4, B4, C5, D5.

64

Measures 64-67 of the musical score. Measure 64: Treble staff has eighth notes A4, B4, C5, D5; Bass staff has eighth notes A4, B4, C5, D5. Measure 65: Treble staff has eighth notes D5, C5, B4, A4; Bass staff has eighth notes A4, B4, C5, D5. Measure 66: Treble staff has a quarter rest, then eighth notes A4, B4, C5, D5; Bass staff has eighth notes A4, B4, C5, D5. Measure 67: Treble staff has eighth notes A4, B4, C5, D5; Bass staff has eighth notes A4, B4, C5, D5.

68

Measures 68-71 of the musical score. Measure 68: Treble staff has eighth notes A4, B4, C5, D5; Bass staff has eighth notes A4, B4, C5, D5. Measure 69: Treble staff has eighth notes A4, B4, C5, D5; Bass staff has eighth notes A4, B4, C5, D5. Measure 70: Treble staff has a half note D5, then a half note C5; Bass staff has a half note A4, then a half note B4. Measure 71: Treble staff has a half note B4, then a whole rest; Bass staff has a half note A4, then a whole rest.

CANZON in A

(*Saranda volde e plio*)
for Brass Quartet

Trombones

Andreas Gabrieli (1533 - 1585)
Arr. Michel Rondeau

Allegro ♩ = 100

Measures 1-4 of the Trombone part. The key signature is A major (three sharps). The time signature is common time (C). The notation is written on two staves. Measure 1 has a whole rest on the top staff and a half note A on the bottom staff. Measures 2-4 contain various eighth and quarter notes, with a repeat sign at the end of measure 4.

Measures 5-8 of the Trombone part. Measure 5 starts with a 5-measure rest on the top staff. Measures 6-8 continue the melodic and harmonic development with eighth and quarter notes.

Measures 9-14 of the Trombone part. Measure 9 has a 4-measure rest on the top staff. Measures 10-14 show a continuation of the piece, with a key signature change to A minor (three sharps) indicated by a natural sign on the F# in measure 13.

Measures 15-21 of the Trombone part. Measure 15 has a 4-measure rest on the top staff. Measures 16-21 are in 3/4 time, as indicated by the time signature change. A tempo change is indicated by a new note value (♩) and a tempo marking of 100.

Measures 22-28 of the Trombone part. Measure 22 has a 4-measure rest on the top staff. Measures 23-28 continue the piece in 3/4 time, with a key signature change to A major (three sharps) indicated by a natural sign on the F# in measure 23.

CANZON in A - Gabrieli - Trombones

30

30

35

35

40

40

44

44

49

49

CANZON in A - Gabrieli - Trombones

3

54

Measures 54-58 of the musical score. The key signature is A major (two sharps). The music is written for two staves. The upper staff features a melodic line with eighth and sixteenth notes, while the lower staff provides a rhythmic accompaniment with eighth and sixteenth notes. The piece concludes with a double bar line at the end of measure 58.

59

Measures 59-63 of the musical score. The key signature is A major. The upper staff continues the melodic line with eighth and sixteenth notes. The lower staff features a more complex rhythmic pattern, including dotted rhythms and sixteenth-note runs. The piece concludes with a double bar line at the end of measure 63.

64

Measures 64-67 of the musical score. The key signature is A major. The upper staff features a melodic line with eighth and sixteenth notes. The lower staff provides a rhythmic accompaniment with eighth and sixteenth notes. The piece concludes with a double bar line at the end of measure 67.

68

Measures 68-71 of the musical score. The key signature is A major. The upper staff features a melodic line with eighth and sixteenth notes. The lower staff provides a rhythmic accompaniment with eighth and sixteenth notes. The piece concludes with a double bar line at the end of measure 71.

CANZON in A

(*Saranda volde e plio*)

for Brass Quartet

F Horn (Trombone)

Andreas Gabrieli (1533 - 1585)

Arr. Michel Rondeau

Allegro ♩ = 100

7

13

21

30

36

43

49

55

61

67

(♩ = ♩.)