

Timpani

Soler Flair
1.

Soler/Johnson

Allegro

6 3

f

18 20 20 10

f

73 *tr* 28 4

f

113 17 20

f

155 *tr*

f

2.

165 Allegro) ♩=104)

f

f

171 *tr* 24

f

Timpani

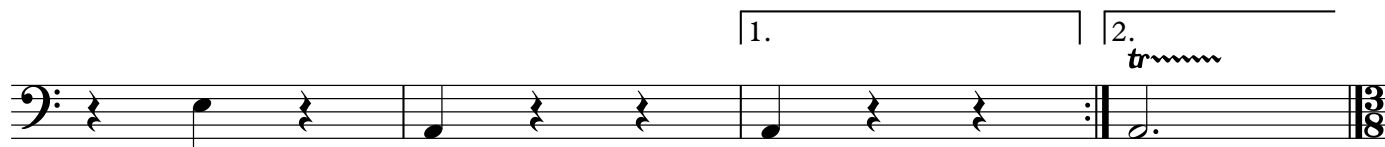
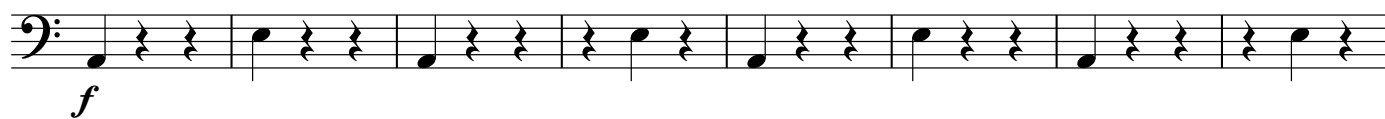
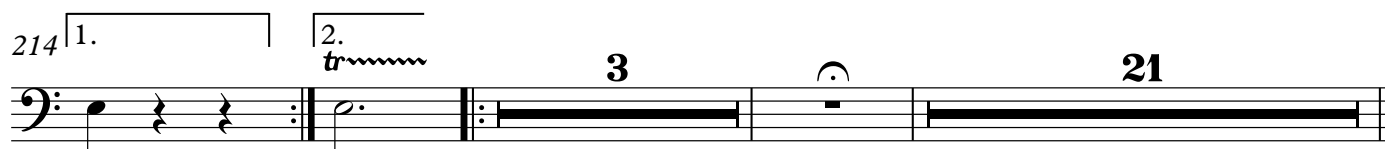
199



207



214



3

3.

2

Musical notation for the bass line of 'The Rose Tree'. The notation is on a single staff with a bass clef. It consists of five measures, each with a different duration: 7, 18, 41, *tr* (trill), and 3. The first four measures are marked with a double bar line and a repeat sign. The fifth measure is marked with a double bar line and a repeat sign.

46 *tr*

Measure 46 in bass clef. The staff contains a sequence of notes: a quarter note G2, a half note G2, a quarter note G2, a half note G2, a quarter note G2, a half note G2, a quarter note G2, a half note G2, a quarter note G2, a half note G2, and a quarter note G2. The final note G2 is marked with a trill (tr) and a repeat sign. The measure ends with a double bar line and a repeat sign.

4.

4

The musical notation for the bass line of 'The Rose Tree' is shown on a single staff. It begins with a bass clef and a key signature of one flat (B-flat). The melody consists of a series of eighth and sixteenth notes, with rests. Above the staff, the number '40' is written, indicating the number of measures in the first section. The second section is marked with a double bar line and a repeat sign, and the number '15' is written above it, indicating the number of measures in the second section. The notation ends with a double bar line and a repeat sign.

The bass line is written on a single staff in bass clef. It begins with a repeat sign, followed by a quarter note G2, an eighth rest, and a quarter note G2. This is followed by a double bar line. Above the staff, the number '18' is written. Below the staff, the number '11' is written. The line continues with a double bar line, followed by a quarter note G2, a quarter note F2, a quarter note E2, and a quarter note D2. This is followed by a double bar line, then a quarter note G2, a quarter note F2, a quarter note E2, and a quarter note D2.

The musical notation for the bass line of 'The Rose Tree' is shown on a single staff. It begins with a bass clef. The first measure is a whole rest, labeled with a large '7' above it. The second measure contains a dotted quarter note followed by an eighth rest. The third measure is another whole rest, labeled with a large '26' above it. The fourth measure contains an eighth rest followed by a quarter note and an eighth note beamed together.

The bass line is written on a single staff with a bass clef. It consists of five measures. The first four measures each contain a quarter note, a quarter rest, and a quarter note. The fifth measure contains a half note. The piece ends with a double bar line and repeat dots. A trill ornament is indicated above the final note.