

Cello

Franz Anton Hoffmeister Streichquintett op. 2 Nr. 5

Quelle: Offenbach a/M
Johann Andre n.d.,
Plate 363
Bearbeiter: flöte

1. Poco Adagio

1. Poco Adagio

5

9

13

16

21

25

31

37

41

pp

f

p

mp

f

p

ff

p

p

fp

p

f

47



53



59



66



71



76



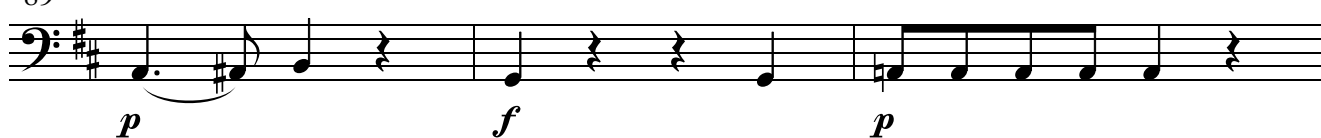
80



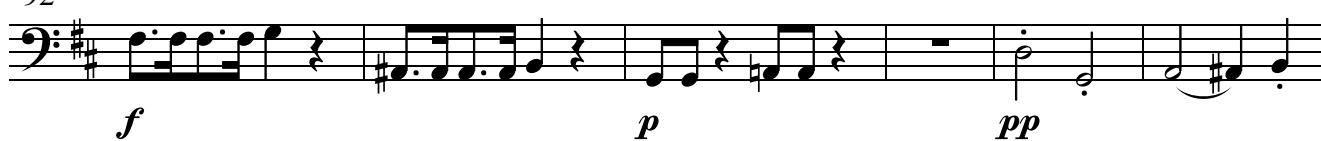
84



89



92



98



Cello

9

17

29

39

50

62

71

83

92

98

Cello

110

f *p*

118

f *p* *f*

128

mp *dolce* *f* *p*

138

mp *dolce* *f*

146

p

158

168

p

176

mf

182

2

194

p *f* *p* *p*

205

f *f*

216

p

This image displays the bass line of the 'The Swan' movement from Camille Saint-Saëns's 'The Carnival of the Animals'. The score is written for a single bass staff in G major (one sharp) and 3/4 time. It covers measures 224 through 337, which conclude the piece. The music is characterized by its elegant, flowing melody and dynamic contrasts. Key features include: a 14-measure rest in measure 224; a series of eighth-note patterns in measures 225-226; a crescendo leading to a fortissimo (ff) section starting in measure 232; a piano (p) section in measure 240; a series of eighth-note chords in measures 245-246; a piano (p) section in measure 250; a series of eighth-note chords in measures 255-256; a piano (p) section in measure 260; a series of eighth-note chords in measures 265-266; a piano (p) section in measure 270; a series of eighth-note chords in measures 275-276; a piano (p) section in measure 280; a series of eighth-note chords in measures 285-286; a piano (p) section in measure 290; a series of eighth-note chords in measures 295-296; a piano (p) section in measure 300; a series of eighth-note chords in measures 305-306; a piano (p) section in measure 310; a series of eighth-note chords in measures 315-316; a piano (p) section in measure 320; a series of eighth-note chords in measures 325-326; a piano (p) section in measure 330; and a final fortissimo (ff) section in measure 337. The score is marked with various dynamics including piano (p), fortissimo (ff), and crescendo/decrescendo hairpins. The piece ends with a double bar line in measure 337.