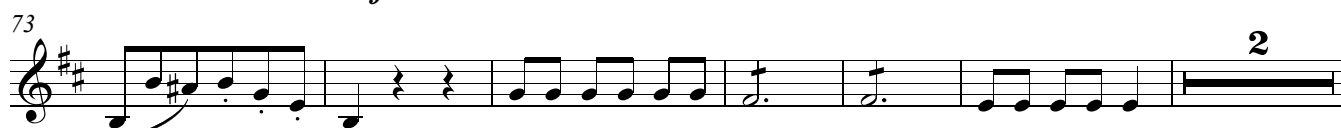
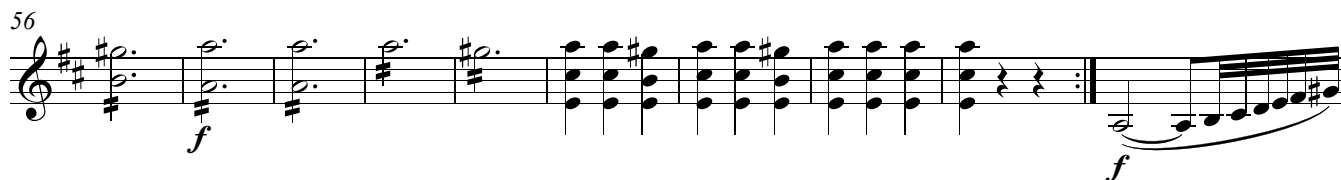
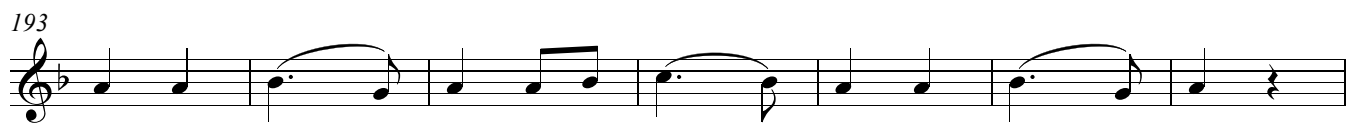
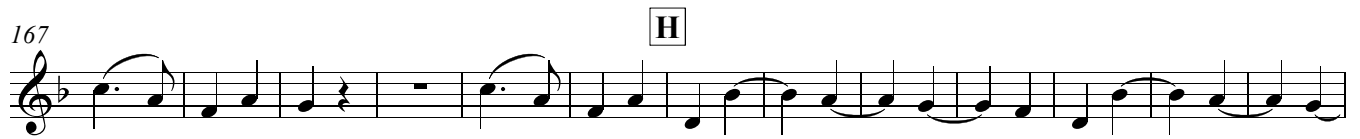


L'Amant Anonyme Overture

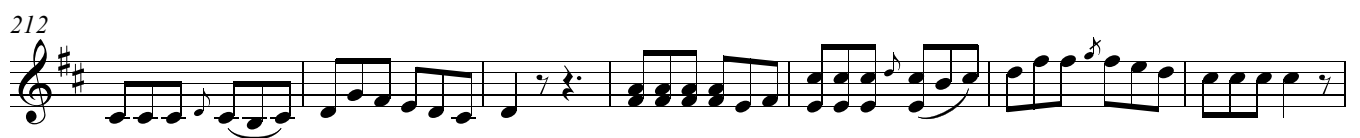
edition: Orhun Orhon
orhunorhon@hotmail.com
Joseph de Bologne
Chevalier de St. George

Presto





207 **Presto**



237 L

244

Staff 237-244: Treble clef, key of D major. Measures 237-244. Dynamics: *p* (measures 237-240), *f* (measures 241-244). Measure 244 ends with a double bar line.

245

Staff 245-253: Treble clef, key of D major. Measures 245-253. Dynamics: *f* (measures 245-250), *p* (measures 251-253). Measure 253 ends with a double bar line.

254

Staff 254-259: Treble clef, key of D major. Measures 254-259. Dynamics: *p* (measures 254-259). Measure 259 ends with a double bar line.

260

Staff 260-265: Treble clef, key of D major. Measures 260-265. Dynamics: *p* (measures 260-265). Measure 265 ends with a double bar line.

266

Staff 266-271: Treble clef, key of D major. Measures 266-271. Dynamics: *p* (measures 266-271). Measure 271 ends with a double bar line.

272

Staff 272-278: Treble clef, key of D major. Measures 272-278. Dynamics: *f* (measures 272-273), *p* (measures 274-278). Measure 278 ends with a double bar line.

279 M

Staff 279-285: Treble clef, key of D major. Measures 279-285. Dynamics: *f* (measures 279-285). Measure 285 ends with a double bar line.

286

Staff 286-291: Treble clef, key of D major. Measures 286-291. Dynamics: *p* (measures 286-291). Measure 291 ends with a double bar line.

292

Staff 292-296: Treble clef, key of D major. Measures 292-296. Dynamics: *f* (measures 292-296). Measure 296 ends with a double bar line.

297

Staff 297-302: Treble clef, key of D major. Measures 297-302. Dynamics: *f* (measures 297-302). Measure 302 ends with a double bar line.

302 **N**

311



318



324



330



335

340 **O**

346



354

361 **P**

370

